



Installation Guide – How to Install SMS360 Basic Edition in Windows OS 64 bit

Table of Contents

1. REVISION HISTORY.....	2
2. COPYRIGHT.....	2
3. TRADEMARKS.....	2
4. DISCLAIMER.....	2
5. ACKNOWLEDGEMENT.....	2
6. INSTALLATION GUIDE.....	3

1. REVISION HISTORY

<i>EDITION</i>	<i>ISSUED DATE</i>	<i>REMARK</i>
EDITION	ISSUED DATE	REMARK
1 st	1 st of June, 2013	Draft release

2. COPYRIGHT

Copyright © 2012 MOBITEK System Sdn. Bhd. All rights reserved.

No part of this document may be reproduced, distributed, stored in a retrieval system or translated into any language, in any form or by any means, electronic, mechanical, magnetic, optical, photocopying, manual or otherwise, without the prior written permission of MOBITEK System Sdn. Bhd.

3. TRADEMARKS

MOBITEK® is a registered trademark owns by MOBITEK System Sdn. Bhd.

Product names, logos, brands and other trademarks referred in this document are the property of their respective trademark holders and are used only to directly describe the products being provided.

4. DISCLAIMER

MOBITEK makes no representations or warranties with respect to the contents hereof and specifically disclaims any implied warranties of merchantability or fitness for any particular purpose.

Furthermore, MOBITEK reserves the right to revise this publication and to make changes from time to time in the contents hereof without obligation to notify any person of such revision or changes.

5. ACKNOWLEDGEMENT

6. INSTALLATION GUIDE

For Windows 7 32 bit and 64 bit, there is **no need** to install:-

1. Microsoft Data Access Components 2.8 Service Pack 1; and
2. Microsoft Jet Database Engine 3.0 Service Pack 8

For Windows 7 32 bit and 64 bit, please install "ActiveX Control Pad" by following the guide below:-

Step 1. Install ActiveX Control Pad from CD

Step 2: Install Microsoft Jet Database Engine 4.0 Service Pack 8

- Windows 2000
- Windows XP
- Windows 2003

Step 3: Install **ActiveX Control Pad** if you **DO NOT** have *Microsoft Office*.

Step 4: Install SMS360.

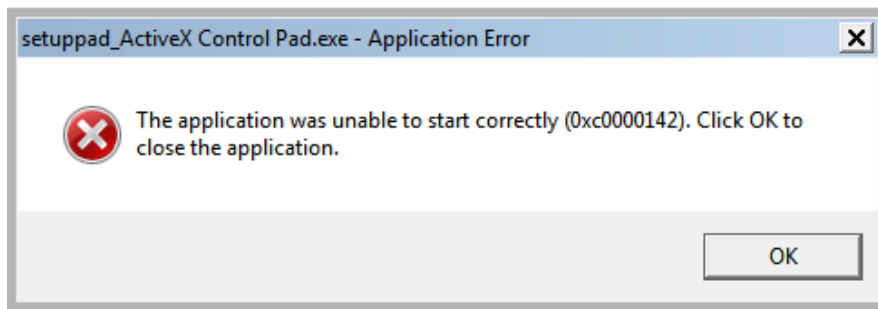
Step 5: Install *User's Manual*.

Or from

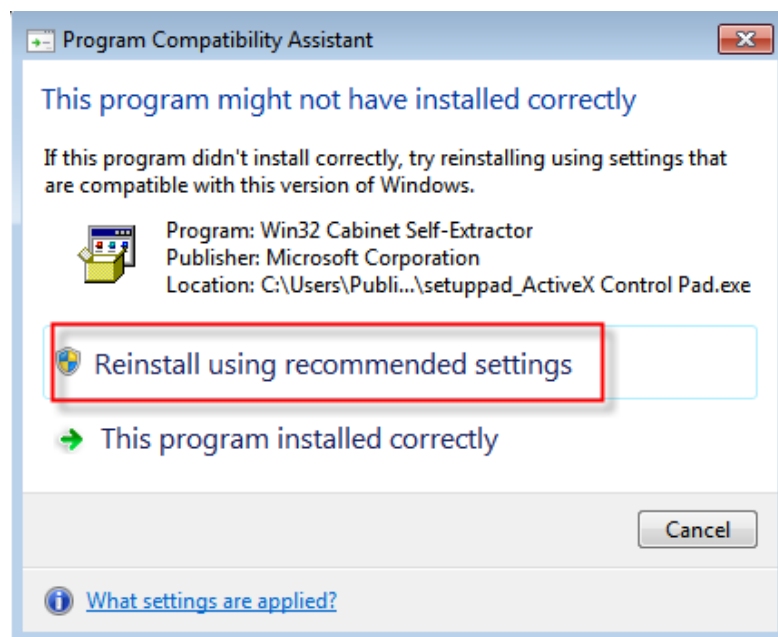
Files Currently on the Disc (7)

USB Driver	2011-02-24 7:31 PM	File folder	
Jet40 SP8 for 2000_Jet40SP8_W2K	2005-12-15 3:21 PM	Application	2,894 KB
Jet40 SP8 for 2003_windowsserver2003-kb...	2005-12-15 3:29 PM	Application	3,918 KB
Jet40 SP8 for XP_Jet40SP8_WXP	2005-12-15 3:20 PM	Application	2,893 KB
MDAC_TYP_28SP1	2006-05-18 11:51 ...	Application	5,958 KB
setuppad_ActiveX Control Pad	2006-06-07 7:14 PM	Application	2,804 KB
WindowsXP-KB835935-SP2-ENU	2006-03-22 12:49 ...	Application	272,391 KB

Step 2. For 64 bit, during installation, an error message will appear, then click "OK" button to dismiss it



Step 3. Wait for "Program Compatibility Assistance" to appear and then click "Reinstall using recommended settings"



Step 4. For both 32 bit and 64 bit Windows 7, install the USB driver version 3.3.0.1**Step 6: Install USB driver**

- install the driver (version 2.0.0.18) for Windows 98 / 2000 / 2003.
- install driver (version 2.0.2.8) for Windows XP
- **install driver (version 3.3.0.1) for Windows Vista / 2008**

Step 5. Proceed with the installation of SMS360 Basic Edition if you have not done so in the beginning.

The end result should be:-

SMS Engine is running.

